

Centre-Pull

Scorpion *Centre-Pull* the original and patented cable and hose protection system

Using only the highest quality, High Velocity and Wear Resistant Nylon, Center-Pull is manufactured to the original patented "Centre-Pull" specification and has remained the market leader and an industry favorite since its introduction

The *Scorpion* cable & hose handler and protector system became the market leader because of its strength, reliability and ultimate practicality

The single re-enforced pull spline gives centrally balanced and controlled towing during operation



Cable and hose separated providing maximum protection from interference abrasion

Designed to withstand some of the most extreme conditions, whether that be over or under ground

ACT Scorpion Centre-Pull is the narrowest cable and hose handler and protector of its type in use today, affording the minimum tip to face distance

Centre-Pull is available in a range of sizes and is capable of accepting most standard sized cables and hoses in common use

Variations of nibbed and plain links are available.

Every link can be 'fully nibbed' where adverse conditions exist and small cable diameters allow uncontrolled release.

Every other link can be 'alternate nibbed' which is harder wearing, lower cost and dis-applied where cable retention is not compromised.

Various combinations of nibbed and plain links can be specified to facilitate easy cable and hose removal

MARKET LEADING CABLE & HOSE HANDLING PROTECTION

Centrepull

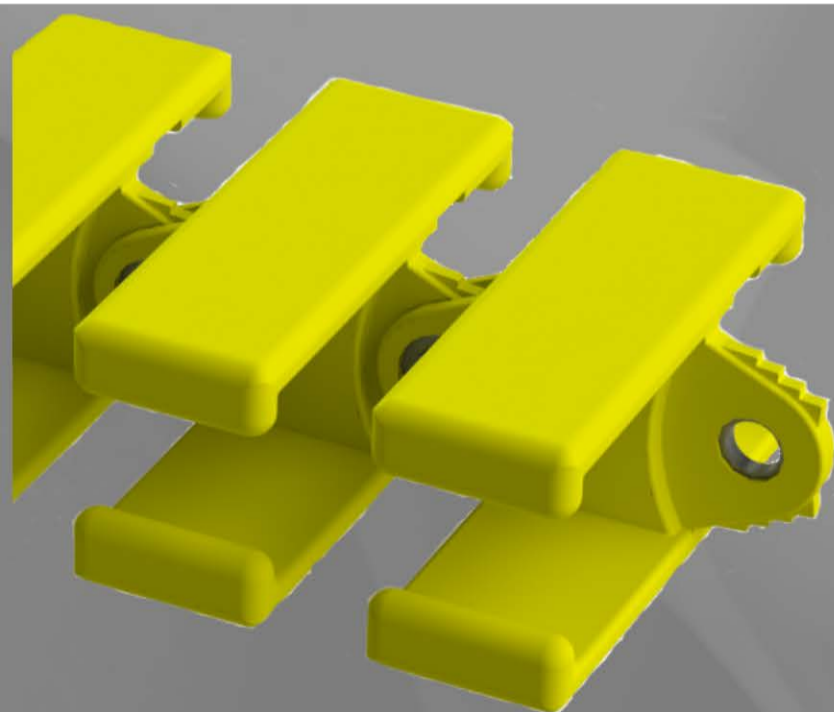
Towing strength = 8 tonnes

ACT Part No	Link Width External W	Link Height External H	Link Height Internal h	Trough Min. Width	Cable Max Dia.	Hose Bore Dia.	Hose Max Dia.	Coupling Max. Dia.	Single Loop Height A	Double Loop Height B
ACTS 602-00	150	90	68	165	60	25	42	50	315	537
ACTS 603-00	174	90	68	190	67	40	55	68	315	537
ACTS 604-00	150	90	68	165	68	25	42	50	315	537
ACTS 605-00	163	90	68	178	60	32	50	55	315	537
ACTS 607-00	198	90	68	213	2 x 50	32	50	55	315	537
ACTS 609-00	156	90	68	171	68	25	42	50	315	537
ACTS 610-00	170	98	76	185	76	40	50	60	355	602
ACTS 611-00	180	98	76	195	76	40	55	68	355	602
ACTS 612-00	184	103	77	199	63	50	67	77	355	602
ACTS 613-00	166	90	68	181	68	40	55	68	315	537
ACTS 615-00	185	108	82	200	82	40	55	68	396	684
ACTS 616-00	216	90	68	231	2 x 60	40	55	68	315	537
ACTS 617-00	192	116	90	207	90	40	55	68	430	744
ACTS 618-00	225	98	76	240	2 x 61	50	68	76	355	602
ACTS 620-00	306	108	82	306	2 x 60	50	68	76	396	684

The above are standard sizes of scorpion Centre-Pull cable handlers, other sizes are manufactured to customer requirements



Centre-Pull is supplied in 1.6mtr lengths

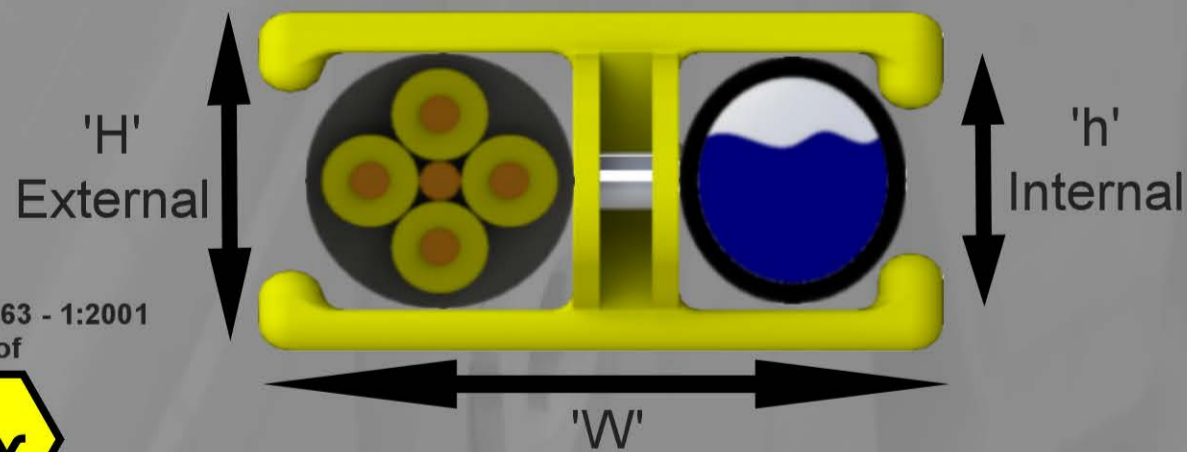


Compliant to EN 13463 - 1:2001
Flammability rating of 'V2' to UL94



I M2

(ATEX) EC Directive 94/9/EC
Group 1 - category M2



(EUROPE)
ACT LIMITED
Highgrounds Road
Worksop
Nottinghamshire
S80 3AT
United Kingdom
Tel: + 44 (0) 1909 512290
Email: admin@acteuro.com

(AUSTRALIA)
ACT PTY LTD
Unit 9,
21 Bay Road,
Taren Point
NSW 2229,
Australia
Tel: + 61 (02) 9531 6188
Email: admin@actaustralia.com

(USA)
LMS GROUP
Email: jtaylor@lmsgroup.us
Tel: (205) 908 4613
Email: Jwhitfield@lmsgroup.us
Tel: (724) 816 4990

(SOUTH AFRICA)
Coleburn Mining Supplies
Tel: + 27 11802 1572
Email: coleburn@ibi.co.za

